

Ticket-BDD-SDIS84

Preuves Portfolio

Traiter des demandes concernant les applications

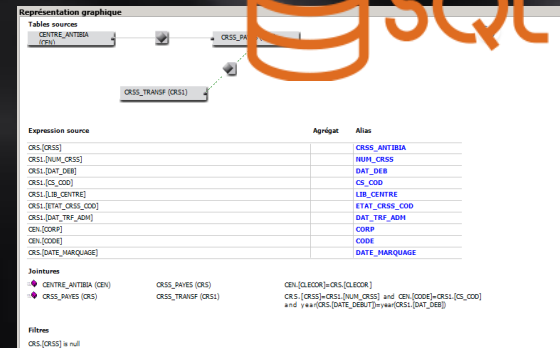
Traitement de données avec OXIO & Modélisation MCD



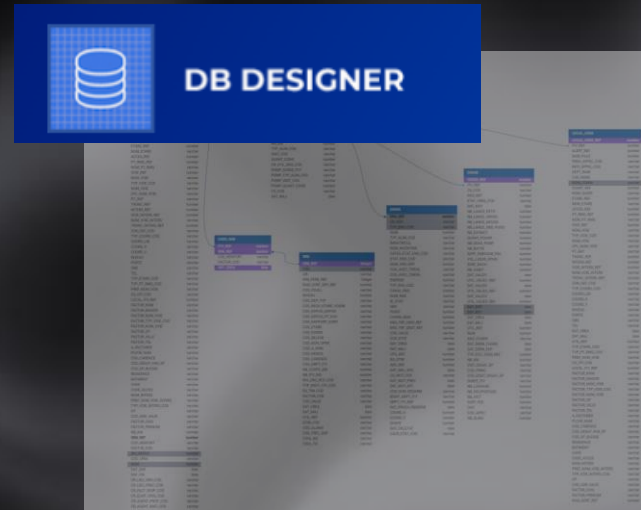
Ticket



ETL



Requêtes



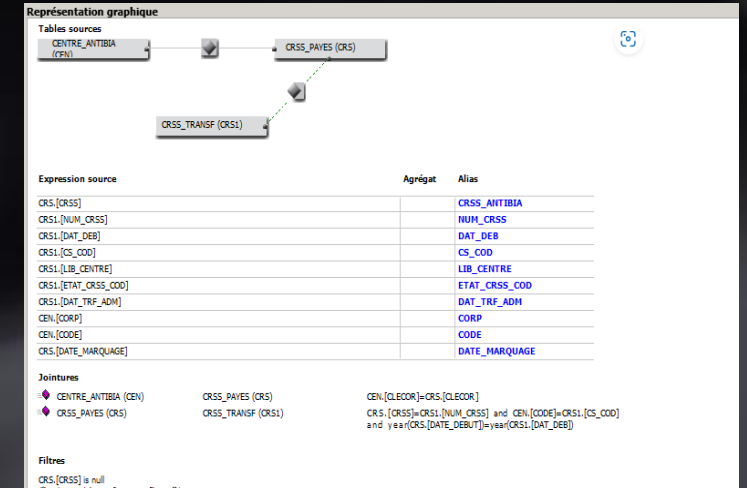
MCD

Objectifs



Suivi de mission.docx

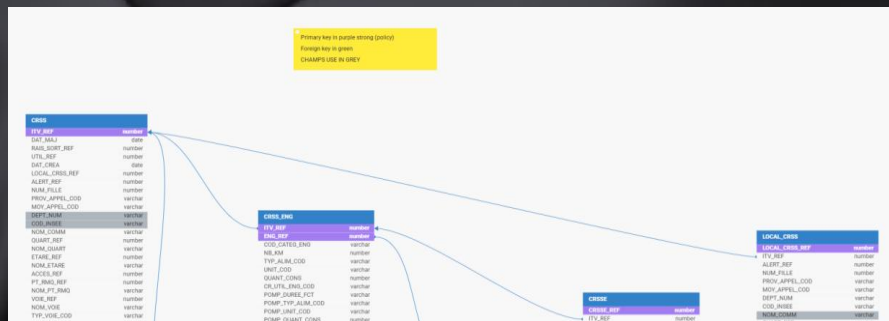
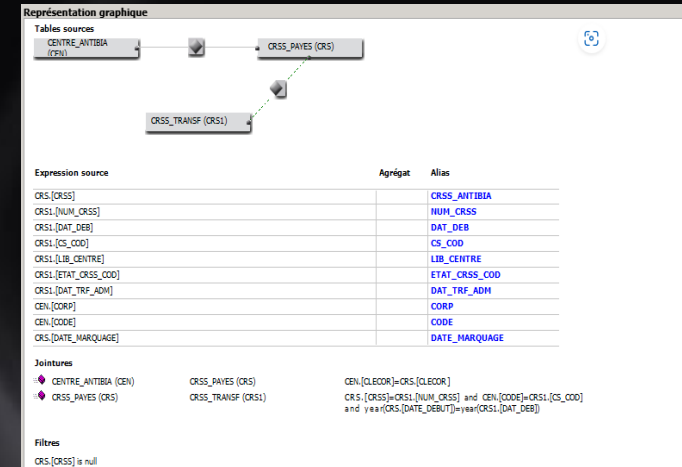
Interface PharmSAP



Requetés faites

Tâches réalisées

✓ Création de requêtes SQL via ETL adapté au champs souhaité



✓ MCD réalisé

Compétences acquises



Analyse des besoins métier. (ticket)



Répondre a un ticket de manière professionnel



Découverte ETL

Difficultés rencontrées

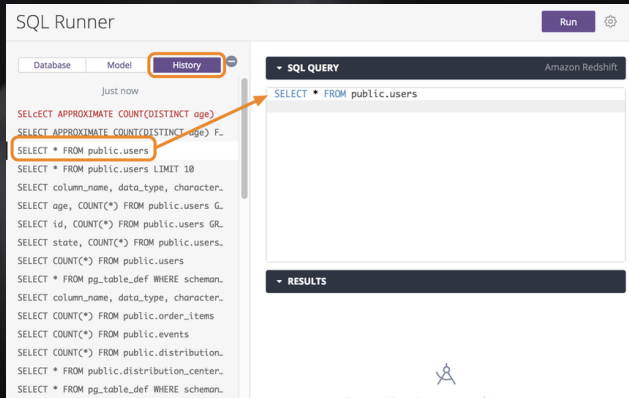


Compréhenssion des différente BDD et Tables



Prise en mains du logiciel ETL OXIO

Résultat



SQL Runner

Database Model History

Just now

```
SELECT APPROXIMATE COUNT(DISTINCT age) F.  
SELECT APPROXIMATE COUNT(DISTINCT age) F.  
SELECT * FROM public.users  
SELECT * FROM public.users LIMIT 10  
SELECT column_name, data_type, character.  
SELECT age, COUNT(*) FROM public.users G.  
SELECT id, COUNT(*) FROM public.users GR.  
SELECT state, COUNT(*) FROM public.users.  
SELECT COUNT(*) FROM public.users  
SELECT * FROM pg_table_def WHERE scheman.  
SELECT column_name, data_type, character.  
SELECT COUNT(*) FROM public.order_items  
SELECT COUNT(*) FROM public.events  
SELECT COUNT(*) FROM public.distribution.  
SELECT * FROM public.distribution_center.  
SELECT * FROM pg_table_def WHERE scheman.
```

SQL QUERY Amazon Redshift

```
SELECT * FROM public.users
```

RESULTS

